



# GLOBAL DEVELOPMENT NETWORK

**LOCAL RESEARCH FOR BETTER LIVES**

## WHO WE ARE

The Global Development Network (GDN) is a public international organization that supports high quality, policy-oriented, social science research in Low- and Middle-Income Countries (LMICs), to promote better lives. **We promote research on the premise that contextualized and locally driven research leads to more informed policies, increased policy ownership, better informed implementation, and more sustainable and inclusive development choices.** We also enable research capacity strengthening across countries and disciplines. Since 1999, GDN has supported over 4000 development research grantees from over 140 LMICs.

GDN was created in the aftermath of the landmark World Bank 1998-1999 World Development Report, *Knowledge for Development*, which set the stage for active promotion of policy research, particularly in developing countries.

## HOW WE HELP BUILD RESEARCH CAPACITY

Research capacity is the ability to define, shape and address questions by generating systematic evidence that abides to the standards that the research community sets with regard to ethics, rigor and relevance. Strengthening research capacity across countries, disciplines and domains is

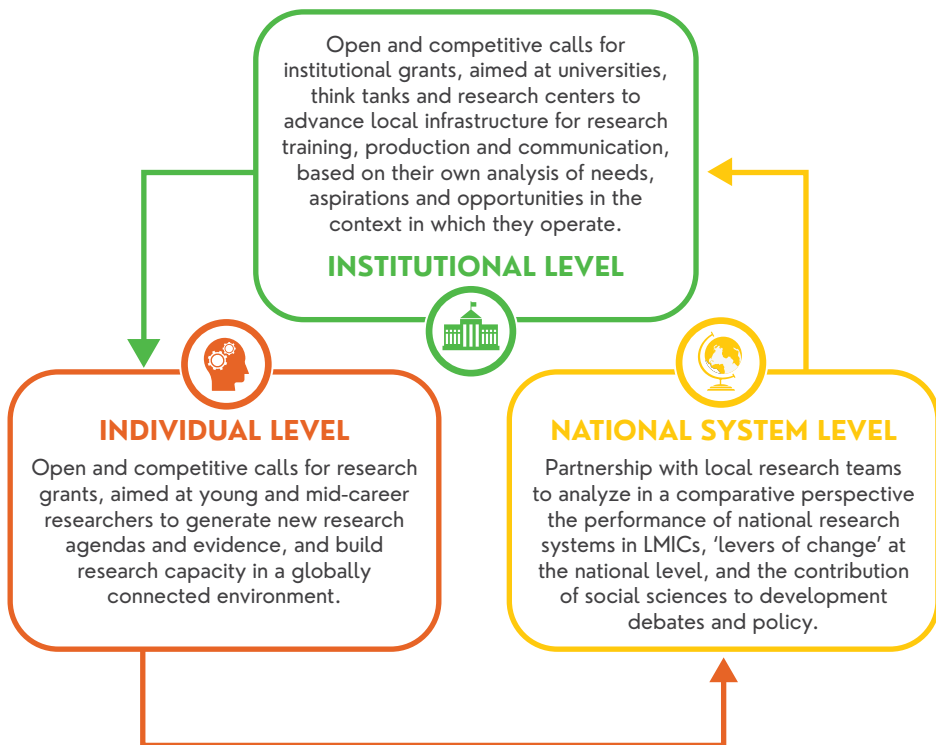


the core of GDN's mission. GDN has an evidence-based approach to capacity building. We advocate for the need to build a wide evidence base on local research ecosystems, in order to understand the way research is conducted, organized and funded and to identify the potential obstacles to its further development. Our goal is to advance demand-driven approaches to research capacity strengthening, so that our support meets context-specific needs.

Research capacity varies across and within countries, and across the LMICs and High-Income Countries (HICs). GDN's objective is to generate dynamics that build globally inter-connected mass capacity, besides funding individual researchers and research training institutions.

## HOW WE WORK

GDN partners with likeminded institutions and international development donors committed to expanding the key contribution of social sciences to development across LMICs. We work at different levels:



## At GDN, we implement our mission in unique ways. Some of our innovative methods include:

---



**NETWORKING AND COLLABORATION** - In all our programs, we connect grantees working in the same area and offer incentives to build global collaboration and dialogue, through peer-review, collaborative grants and joint fundraising, as well as outreach and networking opportunities through the annual global development conference and other events throughout the year.

---



**MENTORING** - We use mentoring to provide world-class trusted support to the projects we fund and their teams. Independent Advisors follow GDN grants from beginning to end, providing critical feedback and enabling competent conversations on the substance and potential of projects. Independent Advisors are an essential support to GDN as well, and guide our management decisions.

---



**POLICY LABS** - Through Policy Labs, we connect research and policy in our programs. A GDN Policy Lab is a space purposefully designed to enable high-quality interactions between researchers and policy actors (broadly understood) when research agendas, themes and approaches are being defined. They have two main outcomes - research agendas of direct interest to policy constituencies on specific policy issues; and the creation of an early demand for research findings amongst potential users in policy and practice.

---



**ASSESSING SOUTHERN RESEARCH SYSTEMS** - We use the evidence generated through the research system mapping work under the GDN Doing Research global initiative to inform the design, implementation and evaluation of our programs. This means that while we work in the implementation of our programs, we are also thinking and discussing systemic determinants and opportunities to advance research policies, funding practices and the role of international support in strengthening research capacity locally.

---



**'GRANT +' MODEL** - Our 'Grant+' model integrates financial support with support on scientific quality, project management, communications, stakeholder-engagement and networking.

---

# GDN WORKS THROUGH

## 1) GRANT-BASED PROGRAMS



Awards



Global comparative research

## 2) NON-GRANT-BASED PROGRAMS



Blog - innovative research communication



Webinars



Annual Global Development Conference



Partnership building



Advocacy for development research

## OUR STRATEGY

GDN follows a three-pronged strategy:

- Partnering with research institutions in LMICs to strengthen their capacities
- Organizing and supporting high-quality collaborative research across geographies and disciplines
- Promoting and facilitating the use of development research by policymakers and other stakeholders

We work on all aspects of development, and have previous experience in subfields such as development finance, agriculture, research systems, governance, industrial productivity, natural resource management, biodiversity, education - with new topics being added every year.

## HOW WE ARE GOVERNED

Formed in 1999 as a unit of the World Bank, GDN became independent in 2001, and is now a public international organization governed by an International Assembly with representatives from Colombia, Hungary, India, Spain and Sri Lanka. A first-class, diverse academic Board of Directors formed by the Assembly appoints the President and fulfills executive functions. GDN's mission is also supported by GDN-EUROPE, an entity created in 2022 and based in the French city of Clermont-Ferrand; and by Global Development Network Inc., a not-for-profit entity registered in the USA.

## FUND OUR WORK

GDN seeks support from funding partners to provide research opportunities to developing country researchers, research institutions or the strengthening of research systems. We provide a whole range of research-oriented services that include:

- Diagnostics of country research systems
- Technical assistance on the design of research and research capacity building programs targeting LMICs
- Project-level support on the design of policy relevant research, choice of methodology and quality of research projects
- Organization and management of research and research capacity building programs
- Peer review and quality control
- Research communication training, dissemination avenues and publications, including national, regional and global events bridging research-policy gaps



Photo credit: iStock



## OUR PROGRAMS AND ACTIVITIES

- Global Development Conference
- Global Development Awards Competition
- AFD-GDN Biodiversity and Development Awards
- Doing Research - Assessing the Environment for Social Science Research in Developing Countries
- Recherche au Sud - to advance research capacity in Sub-Saharan Africa, under the Pôle Clermontois de Développement International
- Savoirs Sahel - Institutional Support to Think-tanks in the Sahel Region
- Institutional Research Capacity Building
- Evidence and Evaluation Synthesis
- Fiscal Policy and Development
- GlobalDev - A Blog on Global Development Research
- Public Development Banks and the Sustainable Development Goals



Photo credit: iStock

## OUR REACH

GDN's programs have mobilized researchers in 38 countries, mainly in LMICs. These include:

**Bangladesh, Benin, Burkina Faso, Cambodia, Cameroon, Chad, Colombia, Democratic Republic of Congo, El Salvador, Ethiopia, Fiji, France, Ghana, India, Indonesia, Ivory Coast, Kenya, Laos, Madagascar, Malaysia, Mali, Myanmar, Namibia, Nepal, Niger, Nigeria, Peru, Romania, Rwanda, Senegal, Singapore, Sri Lanka, The Philippines, Thailand, Timor Leste, Uganda, United Kingdom, and Vietnam.**

Scan the QR Code to visit [www.gdn.int](http://www.gdn.int)  
or write to [communications@gdn.int](mailto:communications@gdn.int) for further information



**INDIA:** 2<sup>nd</sup> Floor, West Wing ISID Complex, 4, Vasant Kunj Institutional Area, New Delhi-110070, India

**EUROPE:** 63 Boulevard François Mitterrand - CS 50320, 63009 Clermont-Ferrand Cedex, France

**US:** Clifton Larson Allen LLP, 901 N. Glebe Road, Suite 200, Arlington, VA 22203, USA